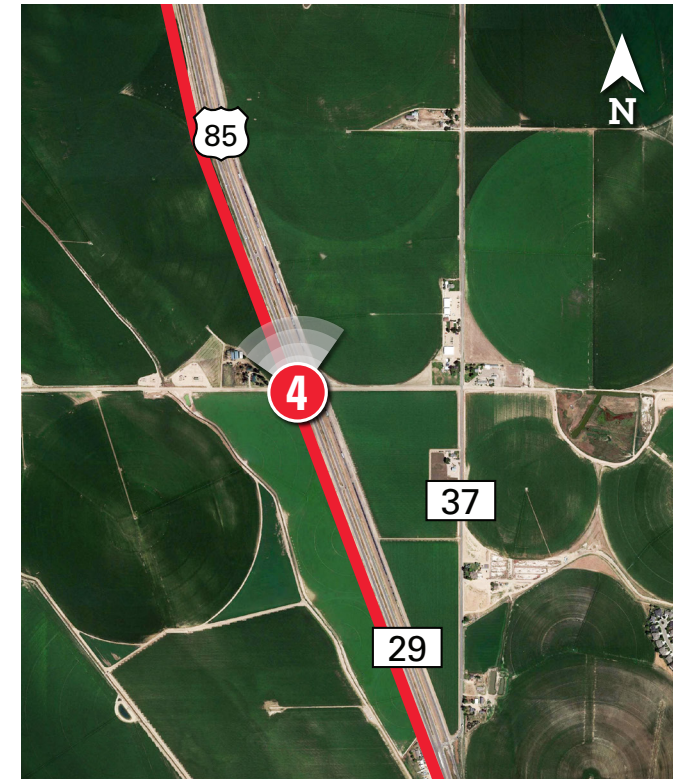


NORTHERN COLORADO AREA PLAN

AULT TO CLOVERLY TRANSMISSION PROJECT

PHOTO VIEWPOINT 4

PHOTO TAKEN: 12/17/2019
TIME: 3:56 PM
DIRECTION: NORTH
LAT: 40°33'13.01"N LONG: 104°43'19.28"W



- 4** PHOTO LOCATION
- PROPOSED ROUTE



PHOTO SIMULATIONS ARE FOR DISCUSSION PURPOSES ONLY. FINAL DESIGN IS SUBJECT TO CHANGE.



EXISTING CONDITIONS



PROPOSED CONDITIONS