

MAPLE GROVE CORRIDOR TRANSMISSION PROJECT TO SUPPORT GROWTH AND MAINTAIN RELIABILITY

INFRASTRUCTURE WILL SUPPORT FORECASTED RESIDENTIAL, COMMERCIAL AND INDUSTRIAL GROWTH IN AREA

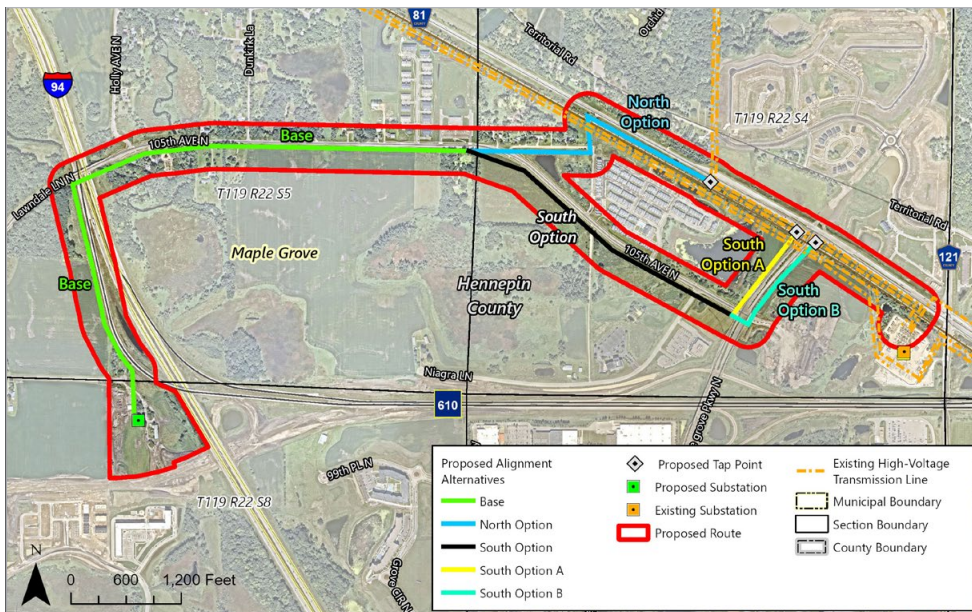


PROJECT OVERVIEW

The area around Twin Cities' northwest suburb Maple Grove is experiencing significant increase in electric use due to the growth of new homes, businesses and neighborhoods, and we expect this growth to continue in the coming years. To continue delivering reliable electricity and accommodate the community's growth, Xcel Energy is proposing the construction of a 115/34.5 kV substation on the west side of Interstate 94 and a two-mile 115 kV transmission line connecting the new substation to an existing transmission line west of the Elm Creek substation. This important electric transmission project will provide significant benefits to customers throughout the area and support residential, commercial and industrial development in the community.

Project benefits:

Xcel Energy is anticipating and responding to increased demand for electricity. This important transmission and distribution project will provide significant benefits to electric customers throughout the area and support residential, commercial and industrial development west of Interstate 94. Currently, distribution feeders in the area are at 55-80% loaded and without the construction of the new transmission line, distribution feeders and substation, Xcel Energy anticipates reliability issues and turning down new commercial and industrial customers.



Proposed Route:

The route option from the new West Maple Grove substation to the existing 115 kV line west of the Elm Creek substation runs on the west side of Interstate 94 to avoid some sensitive areas and mainly follow existing roadways. The route is approximately 2.0 miles and roughly follows 105th Ave North. The northern interconnect option would primarily impact residential properties whereas the southern interconnect option would run through a mix of residential, commercial and undeveloped land.

Regulatory process and review

Xcel Energy is committed to providing the public with opportunities to give feedback and recommendations on the proposed routes. Xcel Energy will begin the public

outreach and regulatory processes ahead of filing the Route Permit application with the Minnesota Public Utilities Commission in mid-2025. Final route proposals will be determined after working with local landowners, local governments, and other key stakeholders. The project's need and eventual route will be reviewed and approved by the Minnesota Public Utilities Commission.

Contact us:

xcelenergytransmission.com/northwest-maple-grove
NWMapleGrove@xcelenergy.com • 612-342-8902