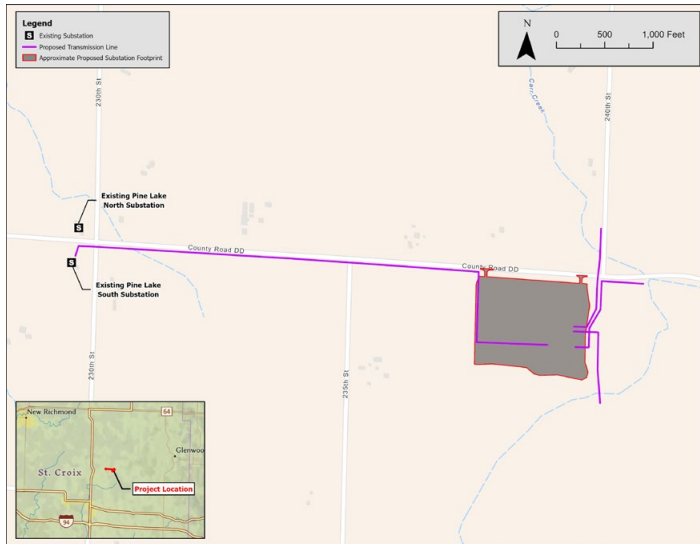


EMERALD SUBSTATION TRANSMISSION PROJECT TO SUPPORT GROWTH AND MAINTAIN RELIABILITY

INFRASTRUCTURE UPDATES WILL IMPROVE SYSTEM RELIABILITY



PROJECT OVERVIEW

The Emerald Substation project is in eastern St. Croix County, Wisconsin on the boundary of the Town of Emerald and the Town of Baldwin. To support anticipated electric growth and ensure continued reliability and safety, Xcel Energy is proposing to construct a new 161/115 kilovolt (kV) substation and associated facilities, including rebuilding approximately one mile of existing double circuit transmission line south of County Road DD.

The project allows for the removal of an existing nonstandard 3-way switch and addresses space constraints at the existing Pine Lake North Substation. The double circuit 115 kV/115 kV transmission line would be rebuilt in the same right-of-way as the existing 161/115 kV transmission line.

Project benefits:

The Emerald Substation project is designed to enhance the reliability and safety of Xcel Energy's transmission infrastructure while meeting the region's growing electrical demand.

The Emerald Substation project will replace aging substation equipment that are reaching the end of their expected lives and will update the infrastructure to meet current electrical standards for operations and safety.

The Emerald Substation is independent of other projects in the area and is not associated with other generation projects being proposed in the area.

Proposed Route:

Xcel Energy proposes to locate the new substation on property purchased along County Road DD. The proposed transmission line rebuild will use the existing line route. In this location, Xcel Energy owns the right-of-way adjacent to County Road DD where the existing line is located and where the new line will be built.

Regulatory process and review

Xcel Energy is committed to providing the public with opportunities to give feedback and recommendations on the proposed routes. Xcel Energy will begin the public outreach and regulatory processes ahead of filing the Certificate of Authority (CA) with the Public Service Commission of Wisconsin (PSCW) in Spring 2025. Xcel Energy will be hosting an in-person public meeting in Spring 2025. The PSCW review is anticipated to take 12-18 months to review and approve the application.



Existing Infrastructure



Proposed Infrastructure

Contact us:

xcelenergytransmission.com/EmeraldSubstation

EmeraldSubstation@xcelenergy.com • 715-737-6449