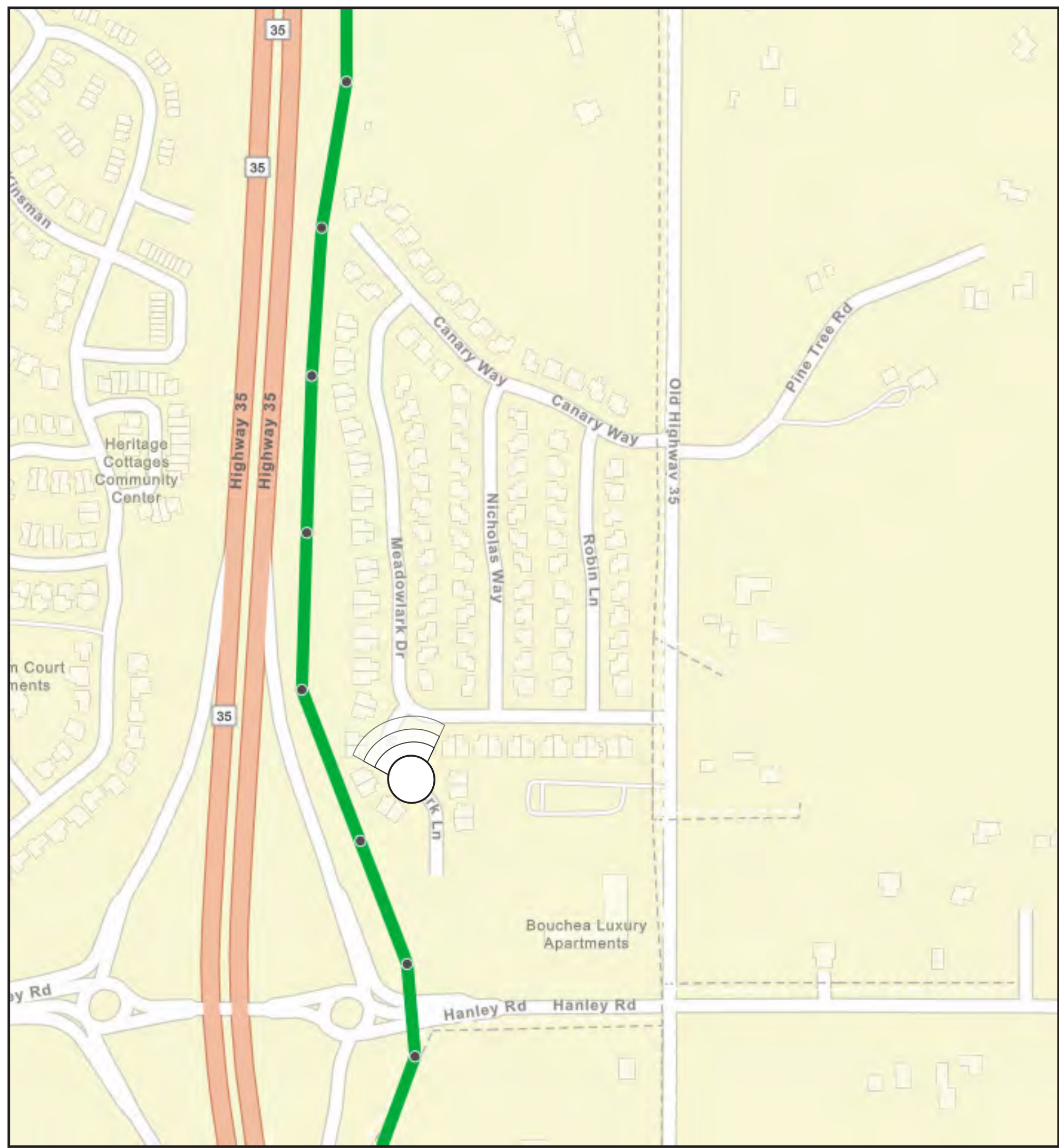




River Falls to Hudson Reliability Project
Hudson Meadows (Hudson, WI)
View: Looking North

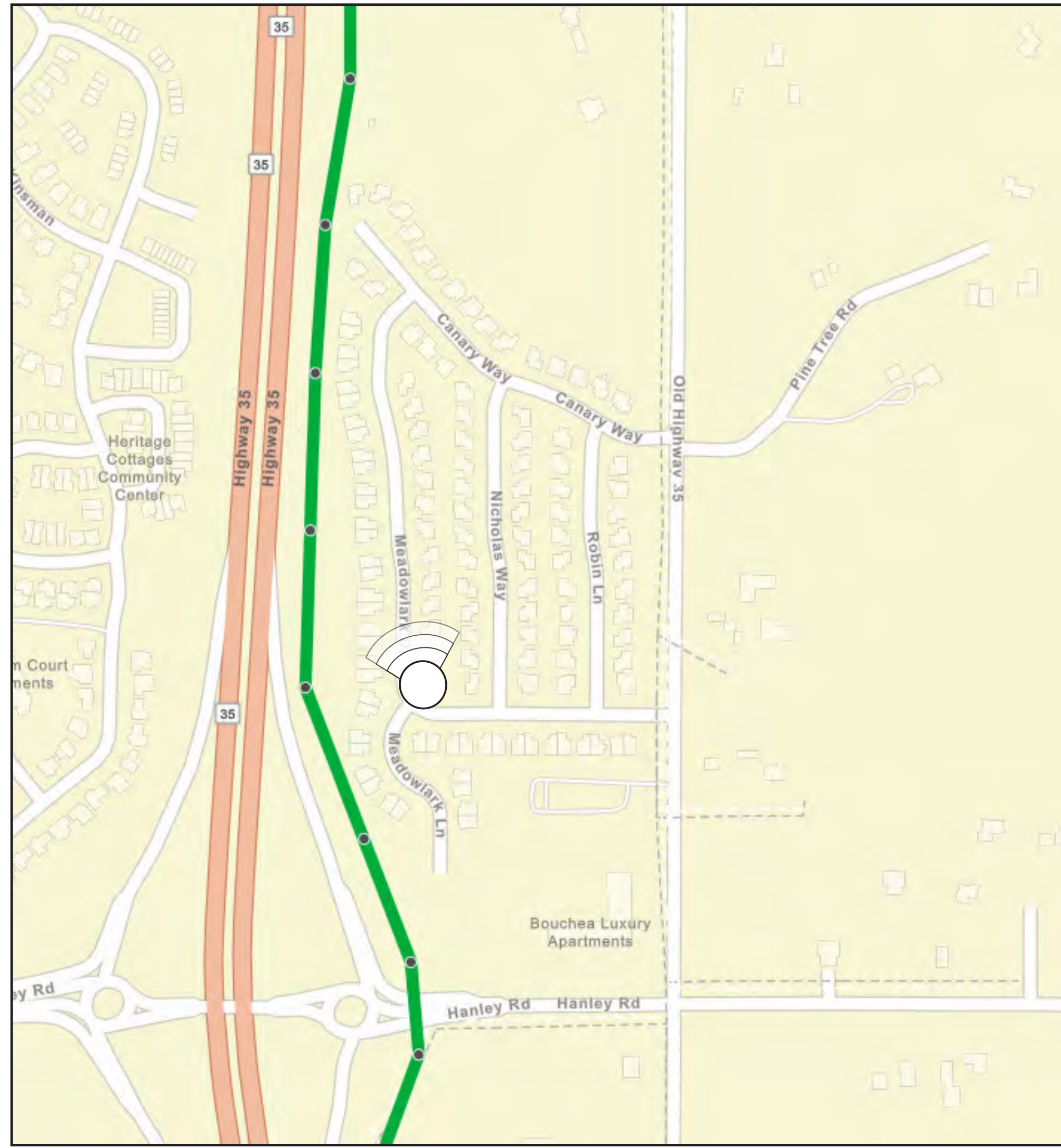
New Structure Height: 80 feet
Proposed Right of Way Configuration: New Right of Way parallel to Highway 35



XcelEnergy Photo simulations are for discussion purposes only. Final design is subject to change.

River Falls to Hudson Reliability Project
Hudson Meadows (Hudson, WI)
View: Looking North

New Structure Height: 80 feet
Proposed Right of Way Configuration: New Right of Way parallel to Highway 35



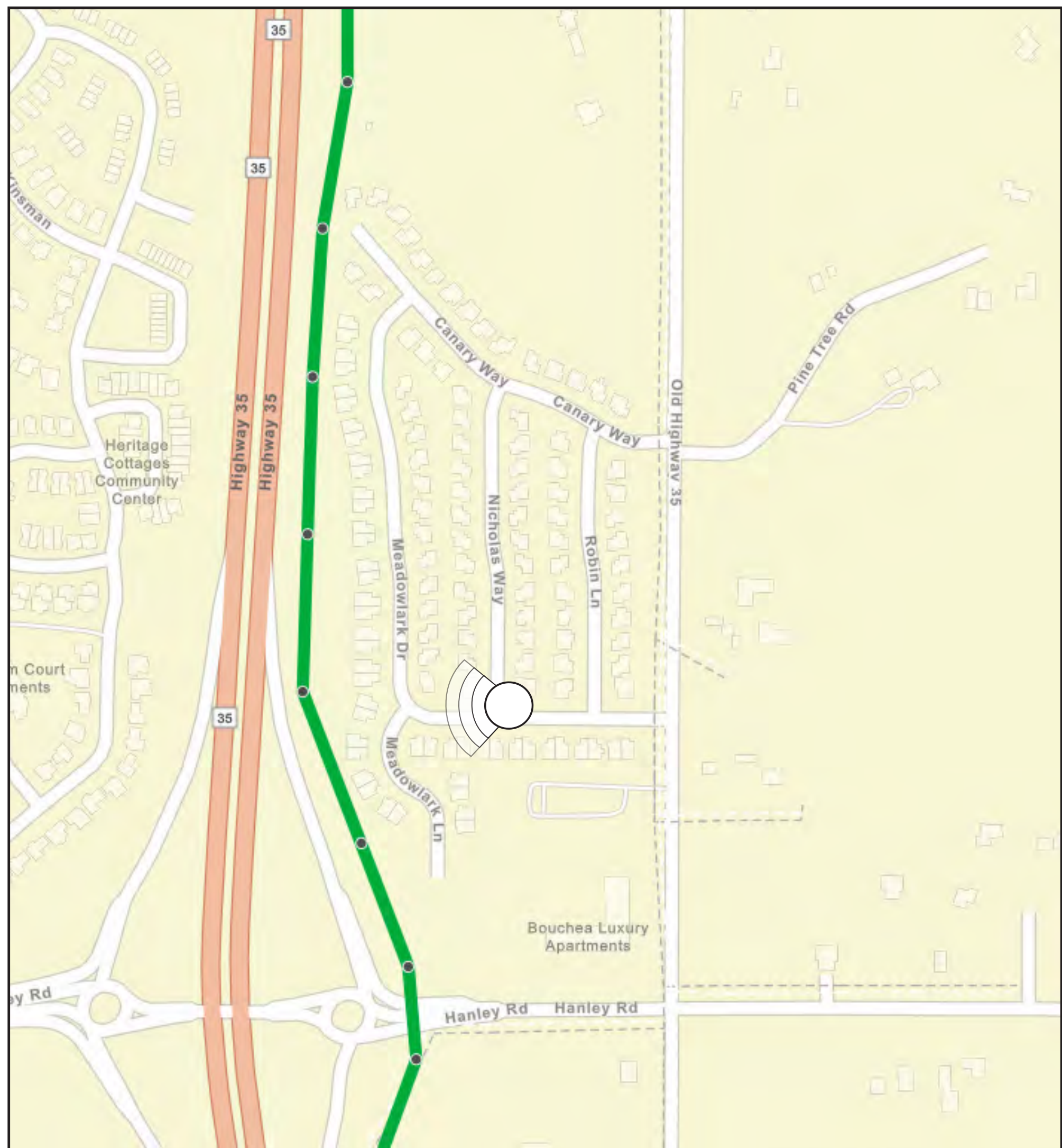
XcelEnergy Photo simulations are for discussion purposes only. Final design is subject to change.





River Falls to Hudson Reliability Project
Hudson Meadows (Hudson, WI)
View: Looking West

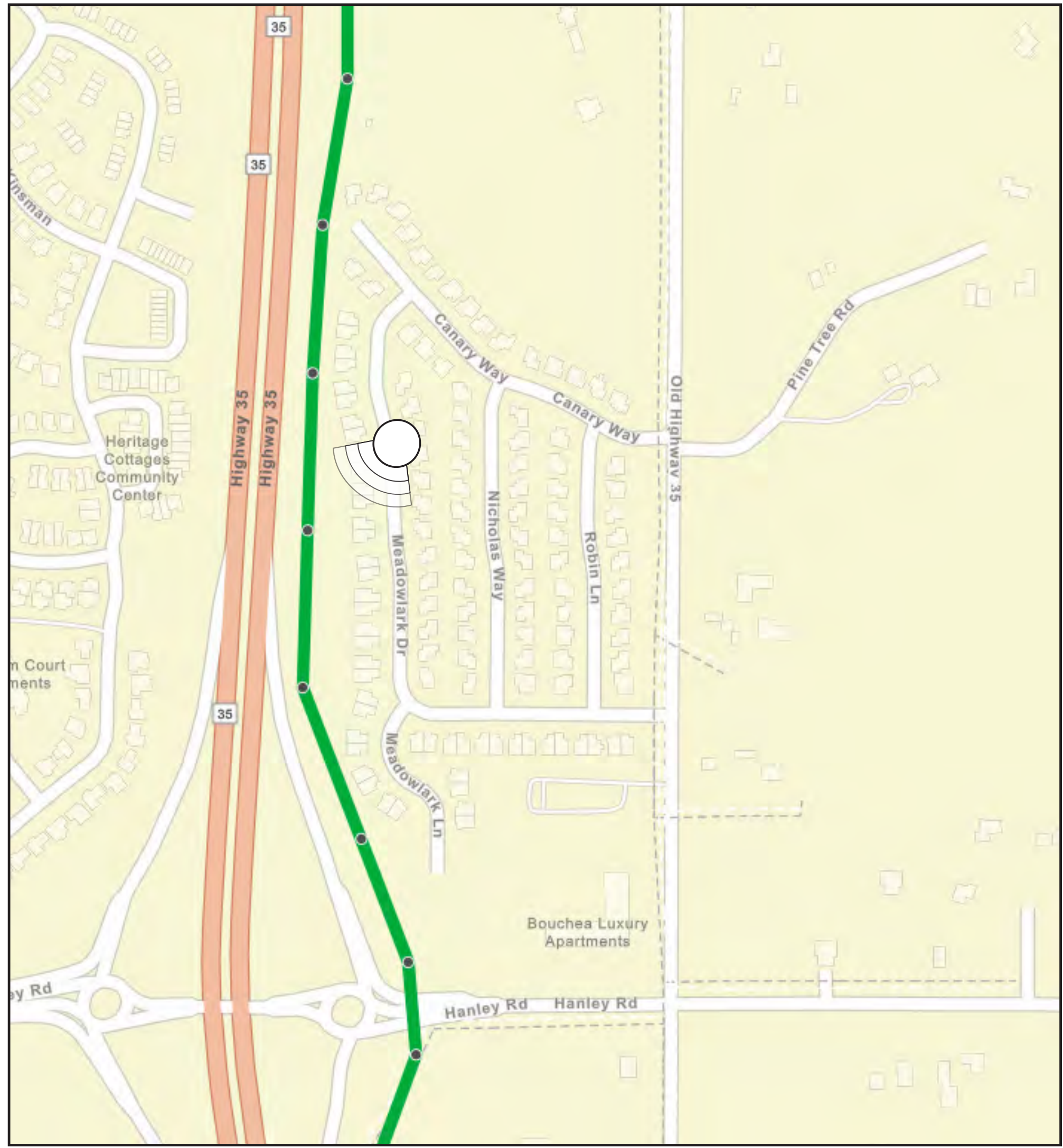
New Structure Height: 80 feet
Proposed Right of Way Configuration: New Right of Way parallel to Highway 35



XcelEnergy Photo simulations are for discussion purposes only. Final design is subject to change.

River Falls to Hudson Reliability Project
Hudson Meadows (Hudson, WI)
View: Looking Southwest

New Structure Height: 80 feet
Proposed Right of Way Configuration: New Right of Way parallel to Highway 35



XcelEnergy Photo simulations are for discussion purposes only. Final design is subject to change.

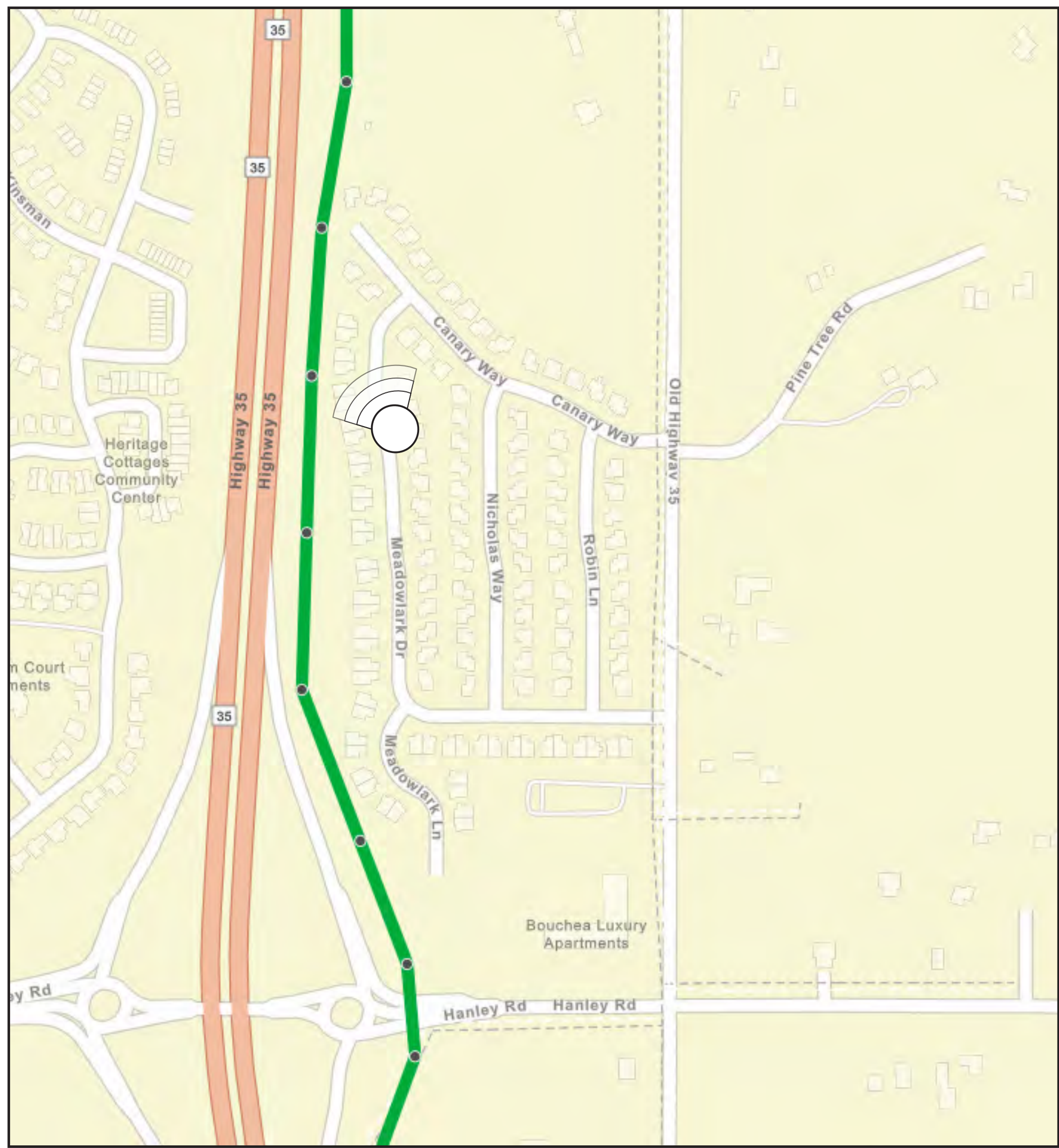


XcelEnergy Photo simulations are for discussion purposes only. Final design is subject to change.



River Falls to Hudson Reliability Project
Hudson Meadows (Hudson, WI)
View: Looking Northwest

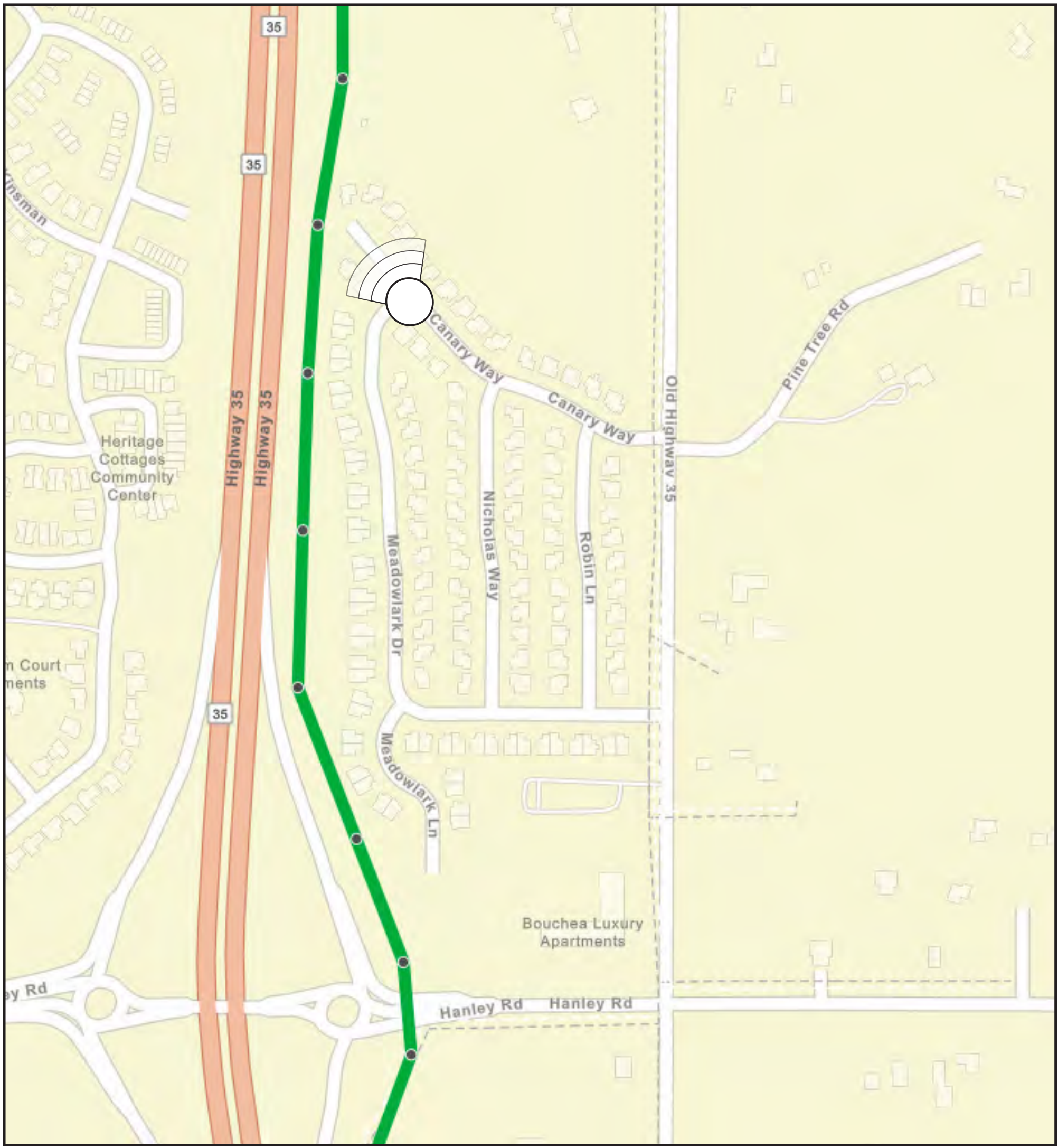
New Structure Height: 80 feet
Proposed Right of Way Configuration: New Right of Way parallel to Highway 35



Xcel Energy Photo simulations are for discussion purposes only. Final design is subject to change.

River Falls to Hudson Reliability Project
Hudson Meadows (Hudson, WI)
View: Looking Northwest

New Structure Height: 80 feet
Proposed Right of Way Configuration: New Right of Way parallel to Highway 35



Xcel Energy Photo simulations are for discussion purposes only. Final design is subject to change.



Xcel Energy Photo simulations are for discussion purposes only. Final design is subject to change.

Current

The map displays the proposed alignment for Segment F of the W3330 project. The alignment is shown as a yellow line running north-south along County Road U. Key features include a bridge crossing a waterway, a roundabout, and various utility markers labeled W3330-49 through W3330-56. The map also shows surrounding land, roads, and a creek.



Current

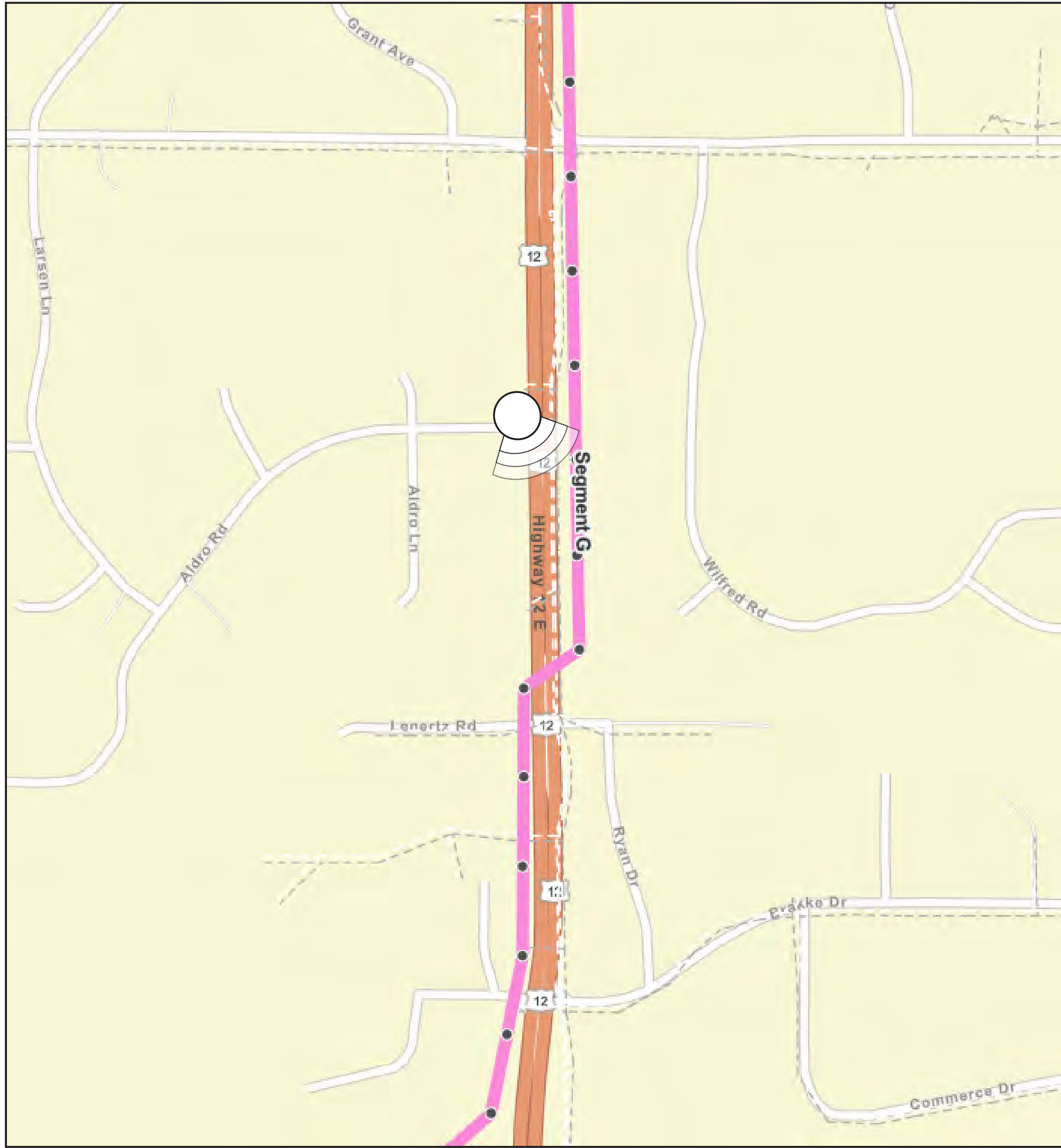


River Falls to Hudson Reliability Project

Highway 12 E (Hudson, WI)

View: Looking South

Existing Structure Height: 42 feet
 New Structure Height: 80 feet
 Proposed Right of Way Configuration: Expanded Right of Way



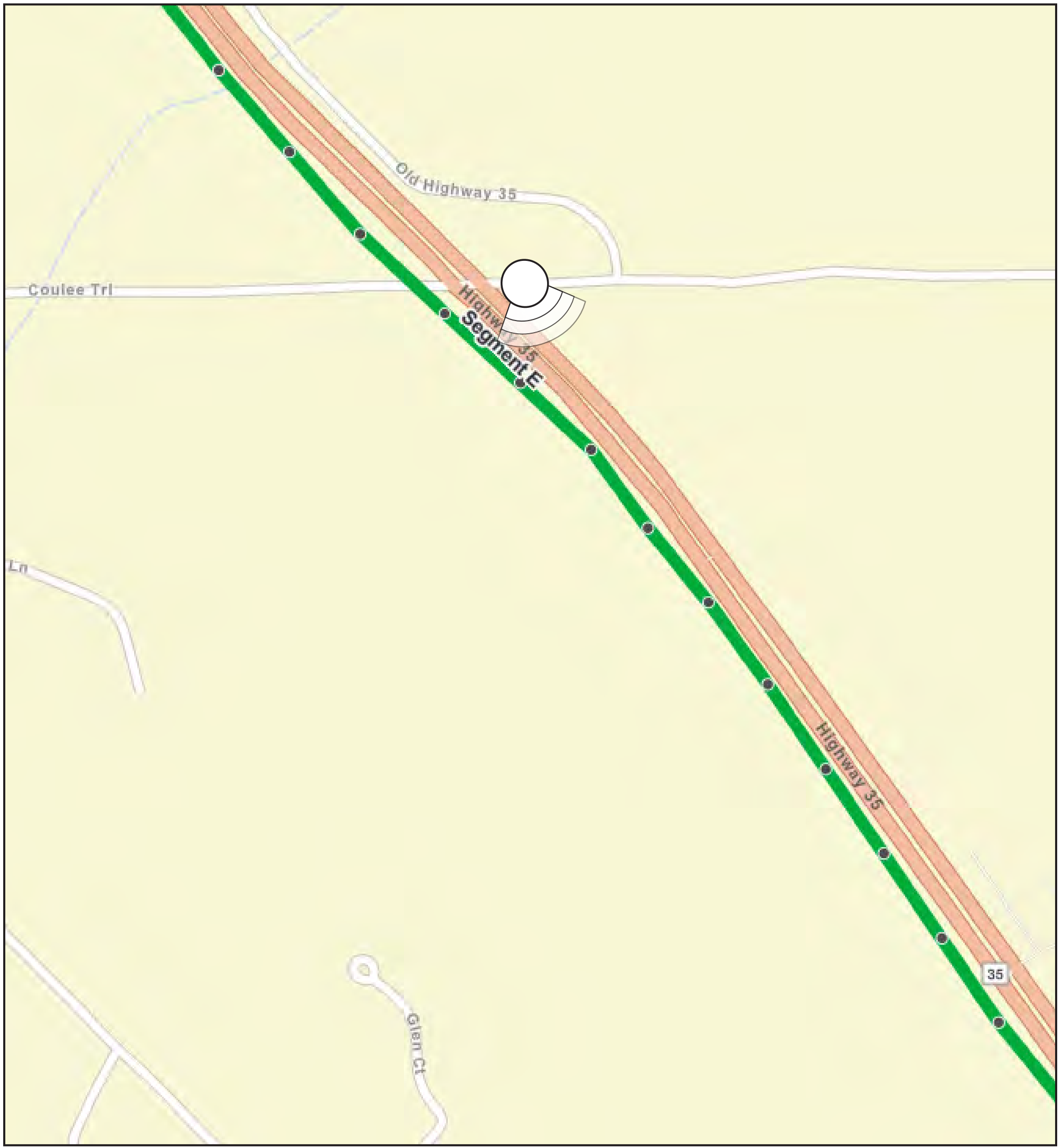
Xcel Energy Photo simulations are for discussion purposes only. Final design is subject to change.

River Falls to Hudson Reliability Project

Highway 35 (Hudson, WI)

View: Looking Southeast

New Structure Height: 95 feet
 Proposed Right of Way Configuration: New Right of Way parallel to Highway 35



Xcel Energy Photo simulations are for discussion purposes only. Final design is subject to change.





River Falls to Hudson Reliability Project
Junction Mill Substation (River Falls, WI)
View: Looking West



Xcel Energy Photo simulations are for discussion purposes only. Final design is subject to change.

River Falls to Hudson Reliability Project
Junction Mill Substation (River Falls, WI)
View: Aerial Looking South



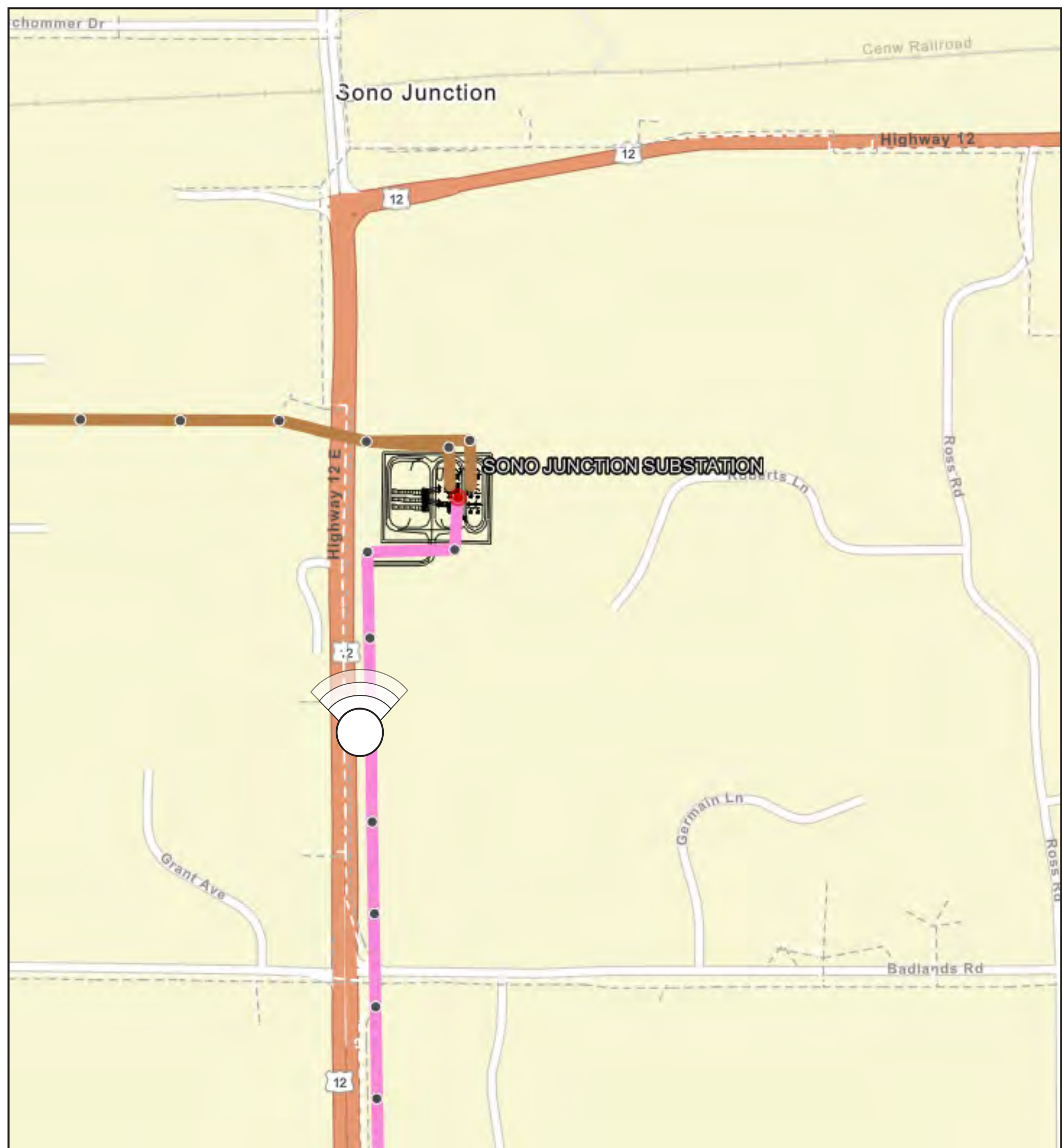
Xcel Energy Photo simulations are for discussion purposes only. Final design is subject to change.



Xcel Energy Photo simulations are for discussion purposes only. Final design is subject to change.

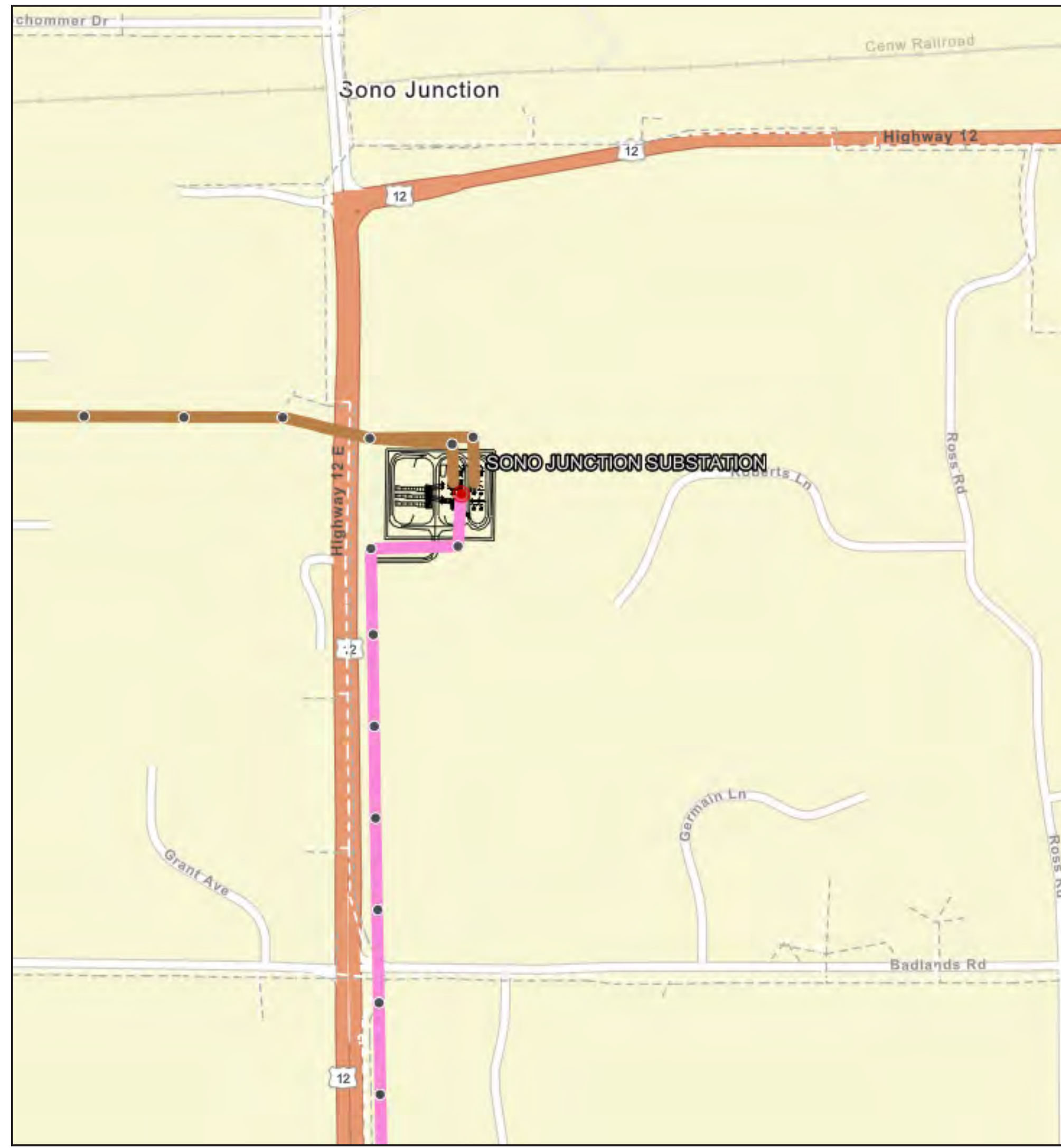


River Falls to Hudson Reliability Project
Sono Junction Substation (Hudson, WI)
View: Looking North



Xcel Energy Photo simulations are for discussion purposes only. Final design is subject to change.

River Falls to Hudson Reliability Project
Sono Junction Substation (Hudson, WI)
View: Aerial Looking North



Xcel Energy Photo simulations are for discussion purposes only. Final design is subject to change.

