

# HUDSON-RIVER FALLS RELIABILITY PROJECT

September 2025



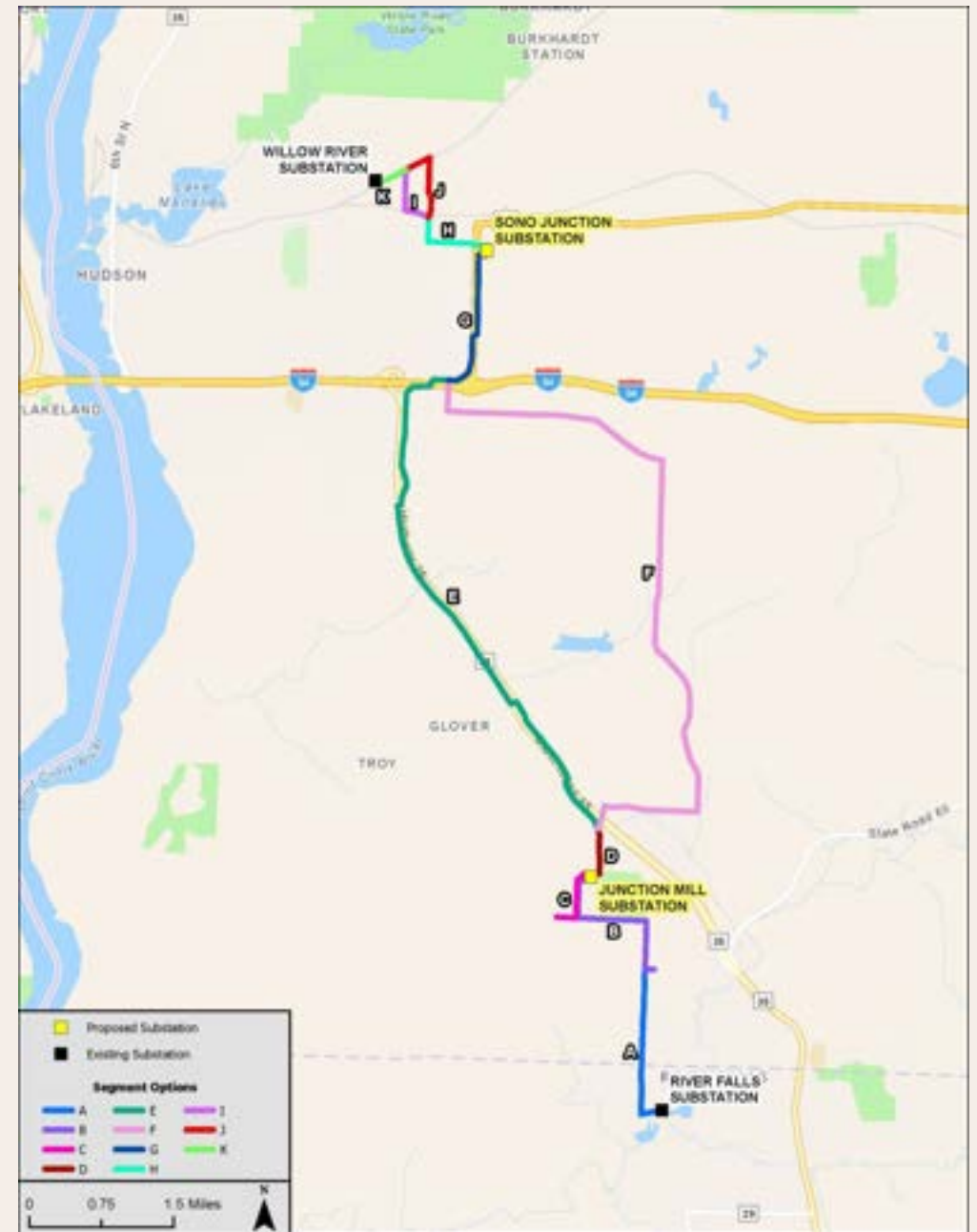
# PROJECT NEED

- The River Falls and Hudson region is one of the fastest growing areas in the Midwest
- This population growth is driving the need for a modernized and expanded transmission system to serve customers into the coming years.
- Xcel Energy is proposing a new 115 kV transmission line and new substations to support current and future energy needs.
  - Other substations will be updated to support the updated system.



# PROPOSED ROUTE SEGMENTS

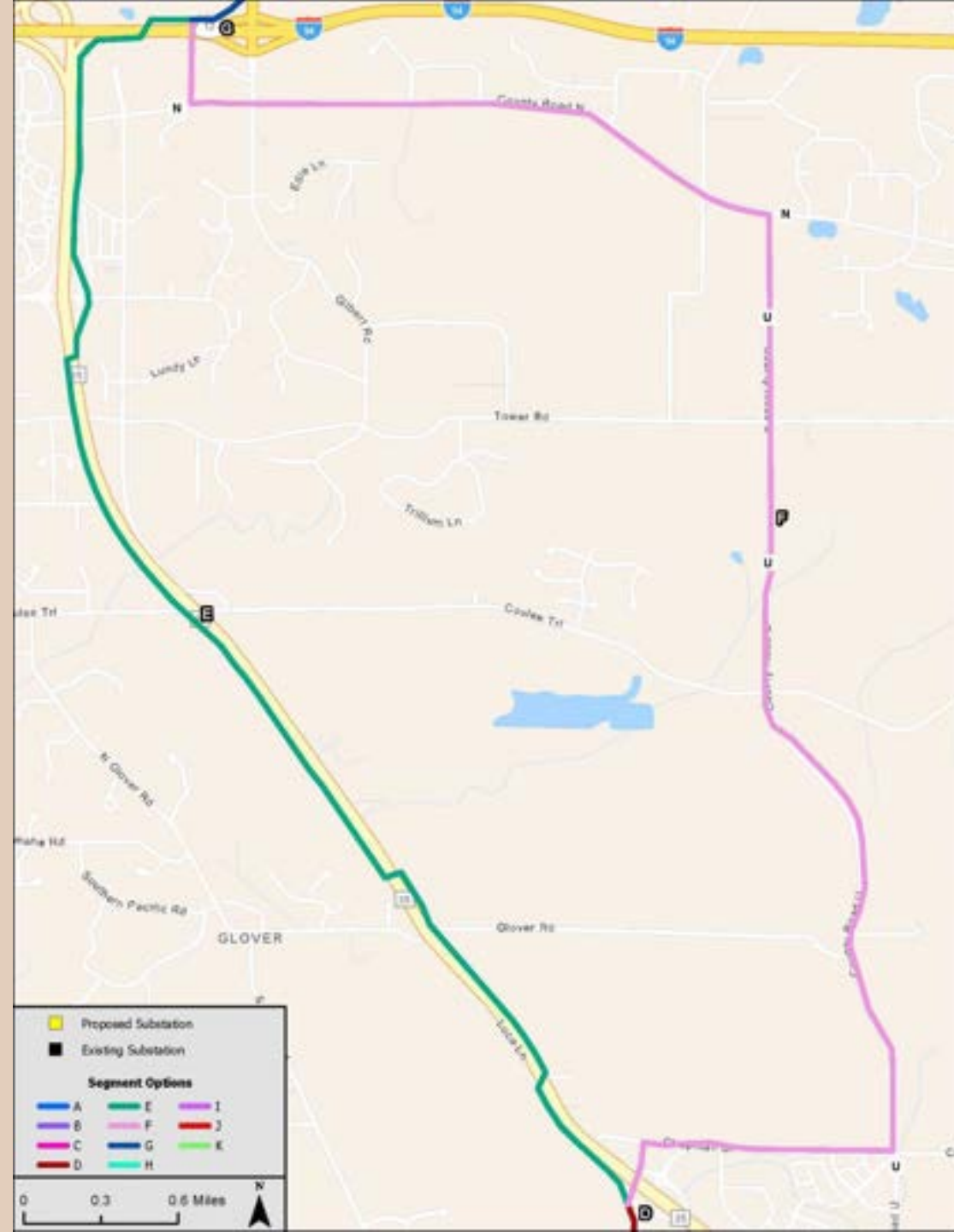
- Follows existing roads and infrastructure as much as possible
- Several route segments under consideration
  - Some segments only have one alternative
  - May include double-circuit structures
- Public Service Commission of Wisconsin will review proposal and determine final route



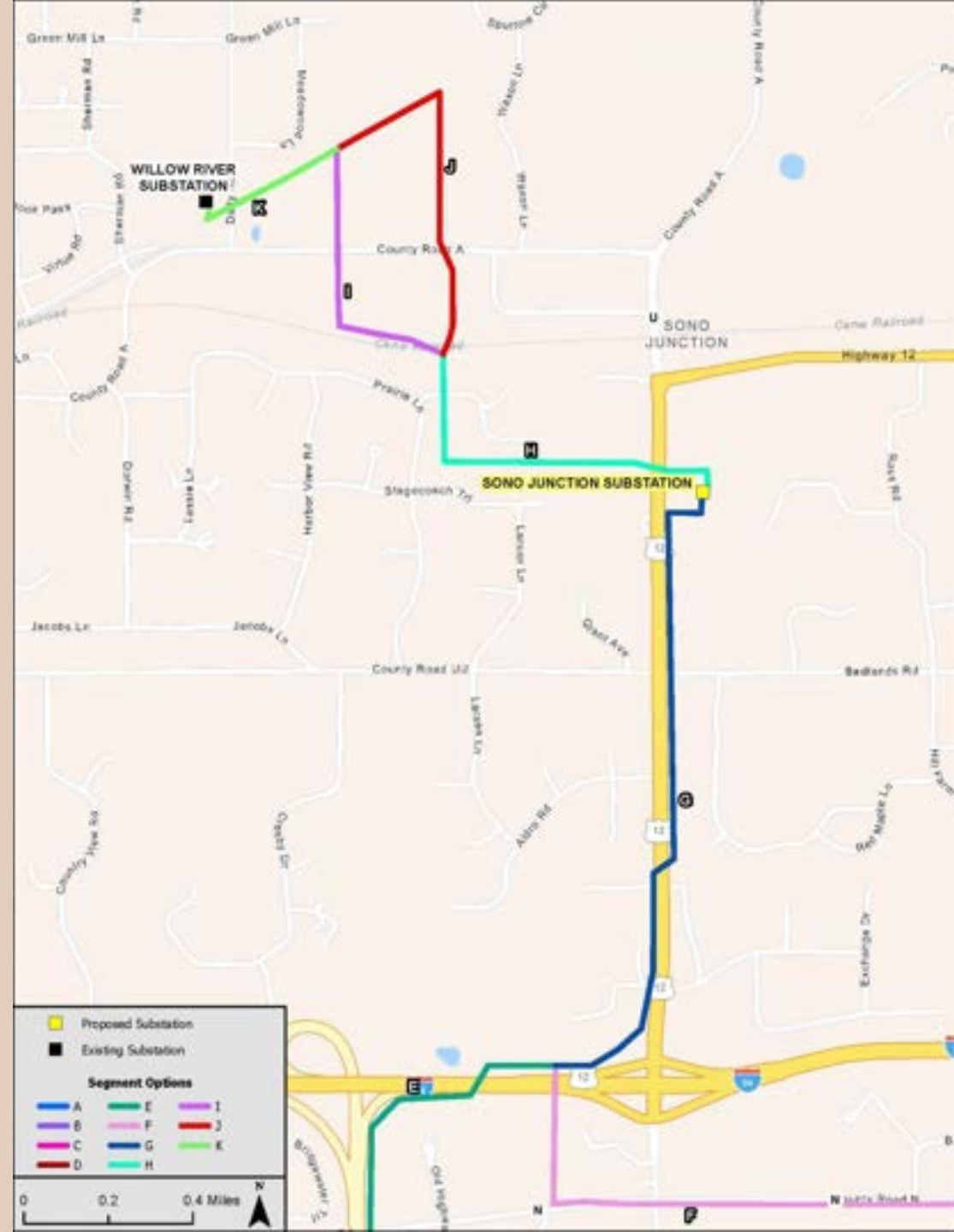
# ROUTE OVERVIEW



# ROUTE OVERVIEW



# ROUTE OVERVIEW



# REGULATORY PROCESS

- Before submitting application
  - Xcel Energy works with landowners and local government units to provide information and collect comments about infrastructure proposal and route options
- Application submission
  - Certificate of Public Convenience and Necessity with the Public Service Commission of Wisconsin (PSCW)
  - Filing expected in early 2026
  - Two end-to-end routes will be proposed
  - 12-18 month review process
    - Includes opportunities for public input and comments
  - PSCW will select one route



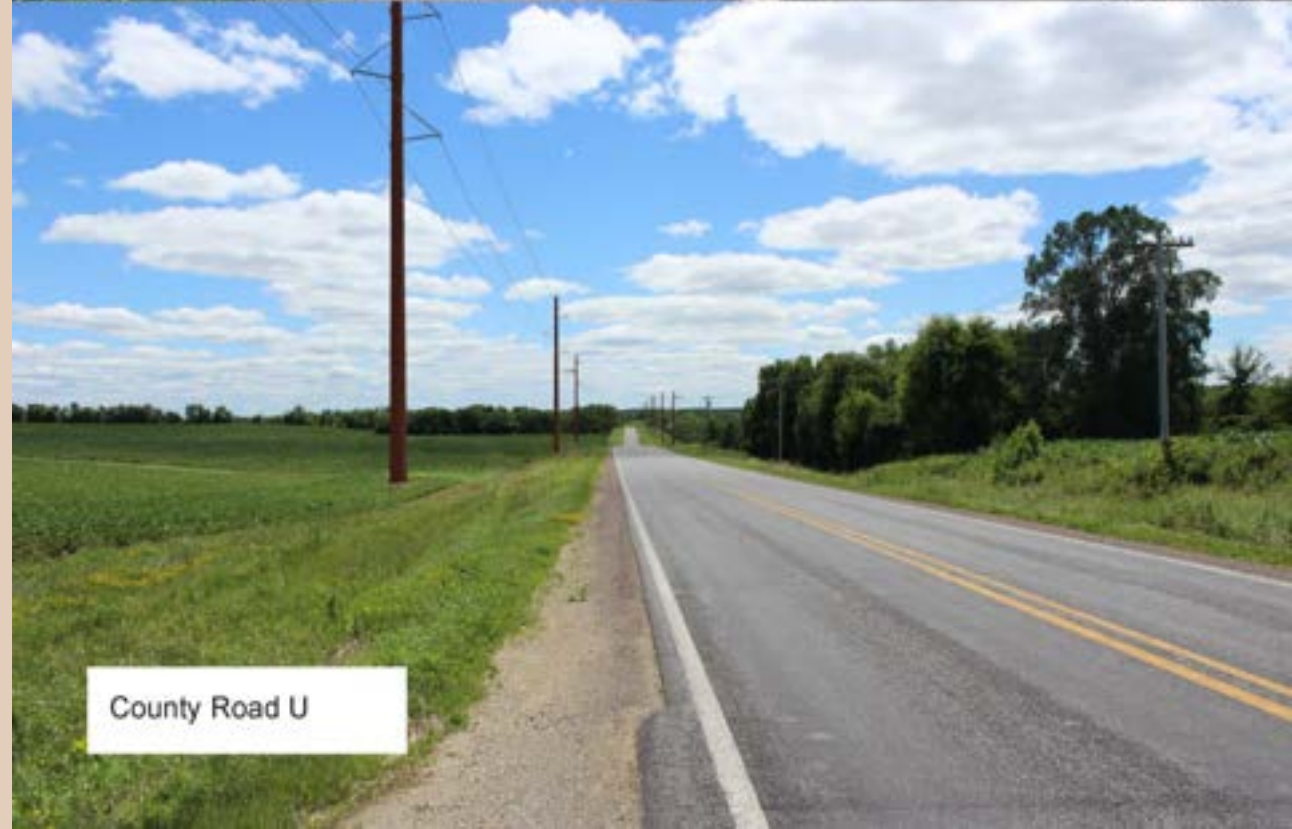


# PHOTO SIMULATIONS





# PHOTO SIMULATIONS



County Road U



# PHOTO SIMULATIONS





# PHOTO SIMULATION



# CONSTRUCTION PROCESS

- Expected to begin in 2028; complete in 2031
- Easement acquisition
- Soil surveys and property staking
- Construction access and tree removal
- Mobilize equipment and material
- Foundation construction
- Install the structure
- String conductor
- Land restoration



# CONTACT US

- Phone: 715-737-6448
- Email: [RiverFallsHudson@XcelEnergy.com](mailto:RiverFallsHudson@XcelEnergy.com)
- Web: [XcelEnergyTransmission.com/RiverFallsHudson](https://XcelEnergyTransmission.com/RiverFallsHudson)



# QUESTIONS

- Please insert questions in chat box on web conference





