

# MAPLE GROVE CORRIDOR TRANSMISSION PROJECT TO SUPPORT GROWTH AND MAINTAIN RELIABILITY

INFRASTRUCTURE WILL SUPPORT FORECASTED RESIDENTIAL, COMMERCIAL AND INDUSTRIAL GROWTH IN AREA



## Project overview

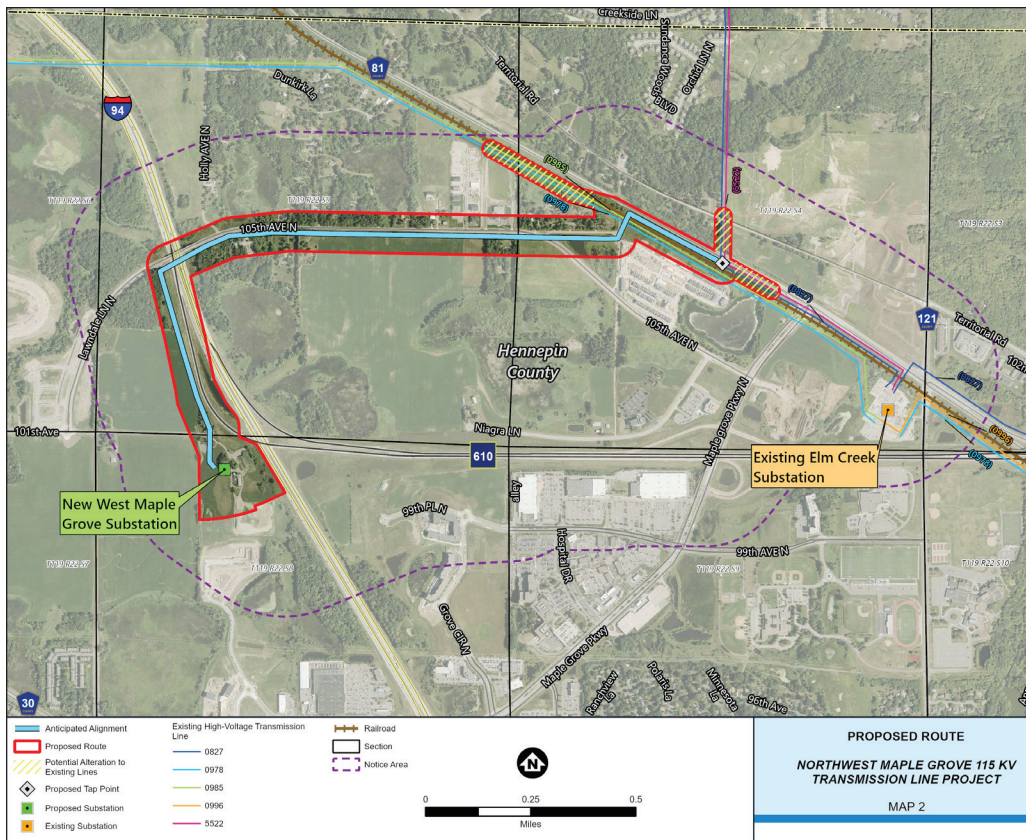
The area around Twin Cities’ northwest suburb Maple Grove is experiencing significant increase in electric use due to the growth of new homes, businesses and neighborhoods, and we expect this growth to continue in the coming years. To continue delivering reliable electricity and accommodate the community’s growth, Xcel Energy is proposing the construction of a 115/34.5-kilovolt (kV) substation on the west side of Interstate 94 and a two-mile, 115-kV transmission line connecting the new substation with the existing Elm Creek substation. This important electric transmission project will provide significant benefits to customers throughout the area and support residential, commercial and industrial development in the community.

## Project benefits

Xcel Energy is anticipating and responding to increased demand for electricity. This important transmission and distribution project will provide significant benefits to electric customers throughout the area and support residential, commercial and industrial development west of Interstate 94. Currently, distribution feeders in the area are at 55-80% loaded. Without the construction of the new transmission line, distribution feeders and substation, Xcel Energy anticipates reliability issues and turning down new commercial and industrial customers.

## Proposed route

The proposed route is from the new West Maple Grove substation to the existing 115-kV line west of the Elm Creek substation. It is aligned along the west side of Interstate 94 to avoid some sensitive areas and mainly follows existing roadways. The route is approximately 2.0 miles and roughly follows 105th Avenue North.



## Regulatory process and review

Xcel Energy is committed to providing the public with opportunities to offer feedback and recommendations on the proposed routes. Following extensive public outreach and regulatory review, Xcel Energy filed a Route Permit application with the Minnesota Public Utilities Commission (MPUC) in November 2025.

In February 2026, the MPUC found the application complete and advanced the Route Permit application in the regulatory process. The MPUC will now begin its formal review, including opportunities for public comment period before a final route determination is made.

## Contact us:

[xcelenergytransmission.com/NWMapleGrove](https://xcelenergytransmission.com/NWMapleGrove)  
[NWMapleGrove@xcelenergy.com](mailto:NWMapleGrove@xcelenergy.com)  
 612-342-8902