

# POTTER-BECKHAM 345-KV TRANSMISSION LINE

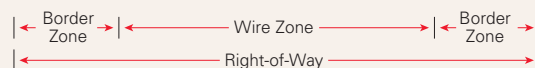
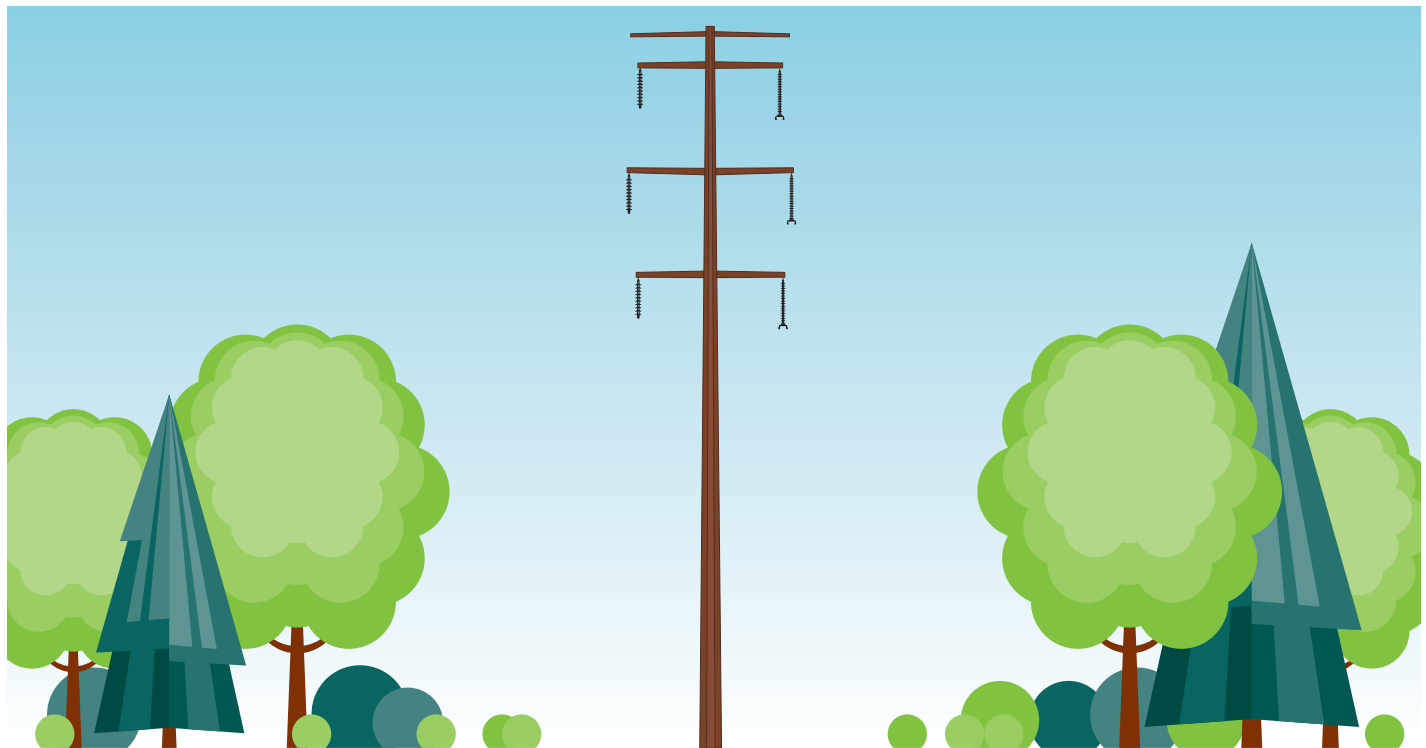
## EASEMENT ACQUISITION AND RIGHT-OF-WAY PROCESS

### EASEMENT ACQUISITION AND SURVEY PERMISSION

- An easement is an interest in real estate authorizing a utility to use the land within the defined easement area known as the Right-of-Way (ROW) to construct, operate and maintain a transmission line and related transmission facilities.
- We will need permission for temporary access to perform engineering, environmental, cultural and land survey studies.
- We will use market data from recent sales of similar properties to determine fair and appropriate compensation for the easement.
- We will make every effort to reach a negotiated settlement for the purchase of the easement.

### WORKING IN THE RIGHT-OF-WAY

- Typically, the landowner retains the right to conduct activities within the easement (such as agricultural operations) provided the landowner's use does not interfere with the construction, operation or maintenance of the transmission facilities.
- Activities not permitted within the easement are those that jeopardize the integrity of the transmission facilities or reduce the ground-to-line clearance, such as the existence of tall growing trees or the existence of buildings in the ROW.
- Landowners need to exercise caution when operating tall equipment, moving irrigation pipes, fueling vehicles or conducting other activities within the easement area.



Do not plant non-compatible vegetation in the border zone or wire zone of a transmission right of way as they will likely require removal.

## INFORMATION SHEET

# POTTER-BECKHAM 345-KV TRANSMISSION LINE

## EASEMENTS AND AGRICULTURE

### Irrigation

- To the extent possible, transmission structures will be placed to avoid conflicts with existing irrigation equipment and its operation.
- ROW agents meet with landowners to learn about site specific circumstances which may need to be addressed.

### Planting and Harvesting

- If crops are damaged during construction or maintenance activities, we will work with landowners to provide compensation.

### Livestock

- In coordination with the landowner, segments of fences may be removed, or access gates may be installed in the ROW during construction.
- The ROW agents and the construction crews would work with landowners to minimize impacts to livestock.
- Gates within the ROW would be left in place to facilitate future maintenance of the transmission facilities.

For more information, visit [xcelenergytransmission.com/potter-beckham-345-kv](https://xcelenergytransmission.com/potter-beckham-345-kv)

#### Contact Information:

Toll-Free Hotline: 877-342-7847

Email: [Potter-Beckham-Texas@xcelenergy.com](mailto:Potter-Beckham-Texas@xcelenergy.com)

