

INFO

WILDFIRE MITIGATION IN TEXAS

Texas Wildfire Mitigation Program

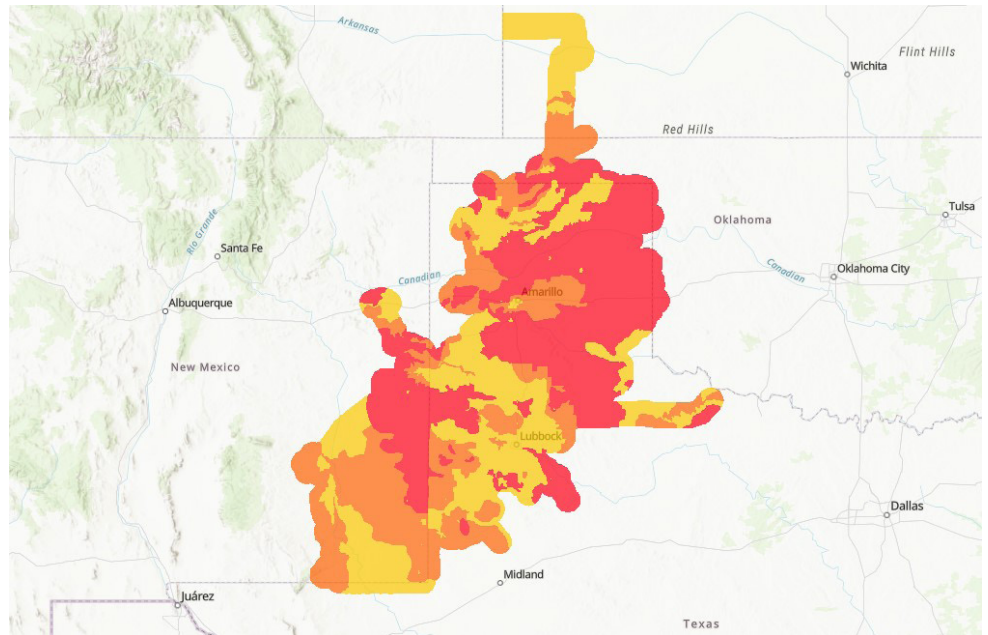
Xcel Energy is committed to making energy work better for you. More severe weather and drier conditions mean wildfires are a near year-round, growing threat in regions across the country, even in areas that haven't traditionally been wildfire prone. Wildfire preparedness and safety is a responsibility shared by everyone, and we're committed to a clear goal: to prevent wildfires associated with our equipment.

In July 2025, the Public Utility Commission of Texas approved \$37.6 million in wildfire prevention and mitigation investments as part of our System Resiliency Plan (SRP). This will allow us to expand and accelerate our system upgrades and maintenance, incorporate evolving risk assessment tools and leverage advanced technologies to build and improve upon our existing efforts to reduce wildfire risk.

As the risk of wildfires increases, we will continue to enhance our wildfire prevention efforts to better protect our customers and the communities we serve.

Wildfire Risk in Texas






We've created a Wildfire Risk Map for Texas, which helps us assess risk, define Wildfire Risk Tiers, and estimate potential for wildfire impacts more accurately. Our Wildfire Risk Map is divided into three Risk Tiers: Tier 1 (lower risk), Tier 2 (moderate risk) and Tier 3 (higher risk). We focus wildfire prevention and mitigation investments in Tier 2 and Tier 3 areas.



WILDFIRE MITIGATION IN TEXAS

Our Initiatives

We're making strategic investments and improvements that support the power grid and build resilience to prevent wildfire ignitions.

	<p>Advanced Technologies</p> <p>We're enhancing our situational awareness – our ability to understand real-time, on the ground conditions – by integrating advanced technologies, like proprietary weather stations and sophisticated software including Technosylva's Fire Sight, RAVE and RAIL tools, to make data-driven decisions that protect our communities. We've also onboarded staff dedicated to supporting our prevention programs.</p>
	<p>System Upgrades</p> <p>We're upgrading equipment and strengthening the reliability of power lines and substations to reduce the potential for ignition. Our strategies include creating vegetation-free zones (defensible space) around our power poles, conducting detailed visual inspections of our power lines, and removing four wood substations from our electric system.</p>
	<p>Preventative Measures</p> <p>We continue to improve the ability of our equipment to react to wildfire risk by using Enhanced Powerline Safety Settings (EPSS) and Public Safety Power Shutoffs (PSPS) when temperature, wind speed, relative humidity and available fuel sources indicate an elevated or extreme risk for wildfire.</p>
	<p>First Responder and Community Outreach</p> <p>Wildfire preparedness and safety is a responsibility shared by everyone. Our team regularly meets with stakeholders in the areas we serve, and especially in high fire-risk areas, to better understand the unique needs of each community. We've also developed plans for communicating with customers during periods of elevated or extreme wildfire risk.</p>
	<p>Safety and Preparedness</p> <p>We're working hard every day to reduce wildfire threats across our service area to help keep you and your community safe. Prepare now by updating your contact information and signing up for outage notifications through My Account or by calling 800-895-4999. We also encourage customers who depend on electricity to help manage a medical condition to begin planning for a backup power source in the event of prolonged power outages.</p>



To learn more about our Wildfire Mitigation Program, including your Wildfire Risk Tier, visit xcelenergy.com/Wildfire.

More questions? Call 800-895-4999.

